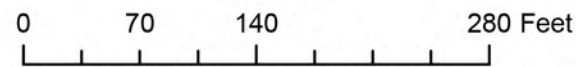
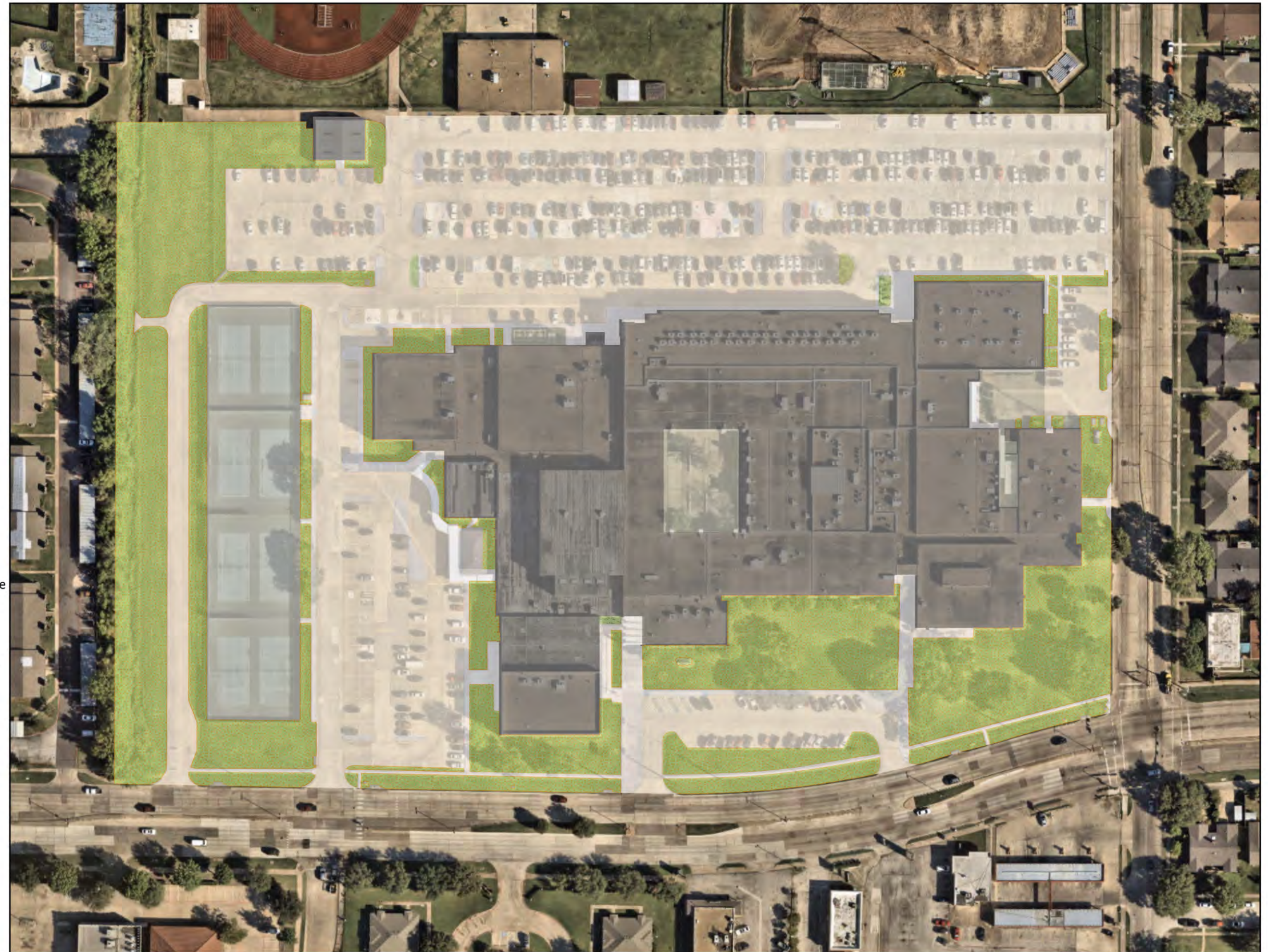


NORTH GARLAND HS - 004

Shaded Areas Summarized Below:

GroundUse	Surface	COUNT	SUM_AC
Athletics Comp	Concrete	1	1.19
Building		2	5.71
Building	Other	1	0
Grass	Natural Turf	19	2
Open	Dirt / Soil	1	0.01
Open	Natural Turf	15	2.62
Other	Concrete	21	0.44
Parking	Concrete	5	7.06
Parking Island	Concrete	16	0.14
Parking Island	Natural Turf	1	0.01
Portable		1	0.03
Shrubbery	Flower Bed	2	0.01
Shrubbery	Mulch	1	0.01
Sidewalk	Concrete	16	0.92

GroundUse,Surface	
	Athletics Comp,Concrete
	Building,
	Building,Other
	Grass,Natural Turf
	Open,Dirt / Soil
	Open,Natural Turf
	Other,Concrete
	Parking,Concrete
	Parking Island,Concrete
	Parking Island,Natural Turf
	Portable,
	Shrubbery,Flower Bed
	Shrubbery,Mulch
	Sidewalk,Concrete



Map Publication 10/31/2024
 Garland ISD - GIS Department
 GISD-GISMaps@garlandisd.net

Acreage calculated on GIS Data, not survey grade.

RE: 354-25 Grounds Maintenance and Related Services